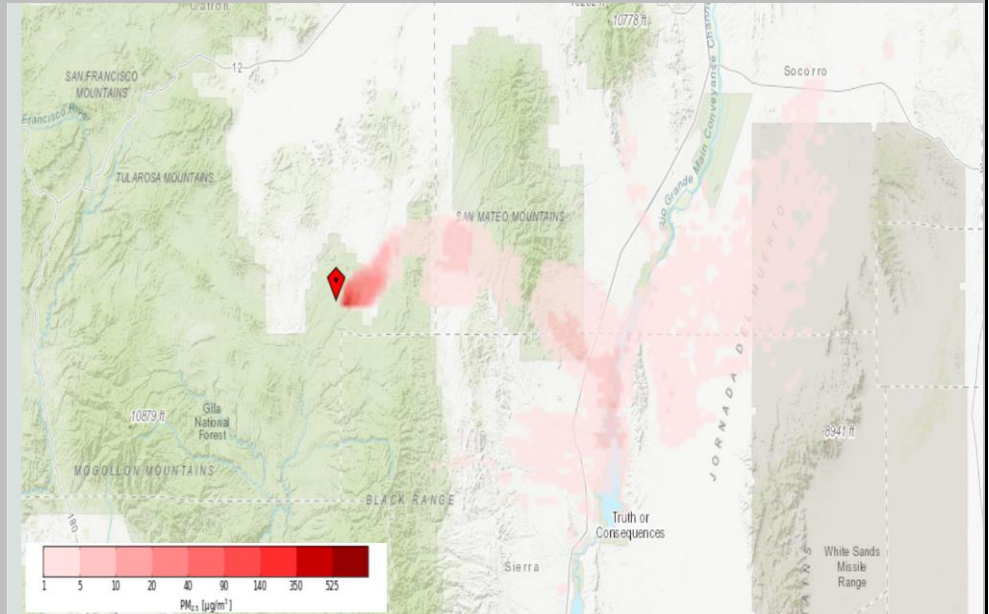


# Indian Peaks Prescribed Fire Air Quality Report and Outlook for 05/28/2019

The Indian Peaks Prescribed Fire consists of 10,000 acres made up of U.S. Forest Service and New Mexico State Trust Lands. Smoke from the Indian Peaks Prescribed Fire may be seen during the day as personnel start in the mid-morning hours. As the day progresses smoke production should increase in the local area of NM Highway 59 and Indian Peaks. High level winds will transport the smoke to the northeast and San Mateo Mountains. As evening approaches smoke will be drawn into the Rio Grande Valley and may settle near Elephant Butte and Truth or Consequences. Communities within the Rio Grande Valley may not notice much smoke production from the prescribed burn during the day, however any smoke that settles overnight within the valley should lift out of the area as sunrise heats up the early morning air mass.



To the right is a predicted snapshot of the smoke model at 10 pm on May 28<sup>th</sup>, 2019. Model predictions show that overall particulate matter will still stay in the good to moderate Air Quality Index (AQI) range.

## Air Quality Outlook (Particulate Matter less than 2.5 µm in diameter)

Community	Tuesday May 28, 2019	Comments
Truth or Consequences	Good	Good air quality during the day. May see slight impacts in the evening hours starting around 7pm.
Elephant Butte	Good	Good air quality during the day. May see slight impacts in the evening hours starting around 7pm.
Winston	Moderate	May see light to moderate impacts starting around 1pm. Smoke may be stronger in the early evening around 5pm.
Poverty Creek	Moderate	May see light to moderate impacts starting around 1pm. Smoke may be stronger in the early evening around 5pm.
Monticello	Good	The area could see light haze during the day, but impacts should be light.
Socorro	Good	Hazy conditions may be seen during the day. Smoke from other prescribed fires may add to the hazy conditions, however no impacts to air quality are expected.
Williamsburg	Good	Good air quality during the day. May see slight impacts in the evening hours starting around 7pm.
Dusty	Good	No impacts anticipated.
San Antonio	Good	The area could see light haze during the day, but impacts should be light to none.

[https://tools.airfire.org/monitoring/v4/#/?monitors=lon\\_.107.654\\_lat\\_33.321\\_usfs.1054&category=PM2.5\\_nowcast&centerlat=33.1575&centerlon=-106.7093&zoom=8](https://tools.airfire.org/monitoring/v4/#/?monitors=lon_.107.654_lat_33.321_usfs.1054&category=PM2.5_nowcast&centerlat=33.1575&centerlon=-106.7093&zoom=8)  
<https://airnow.gov/index.cfm?action=aqibasics.aqi>

**Disclaimer:** Forecasts may be wrong - use at your own risk as weather and fire activity can change quickly. Children, older adults and those with cardiovascular or respiratory diseases are most sensitive. See your health professional as needed.