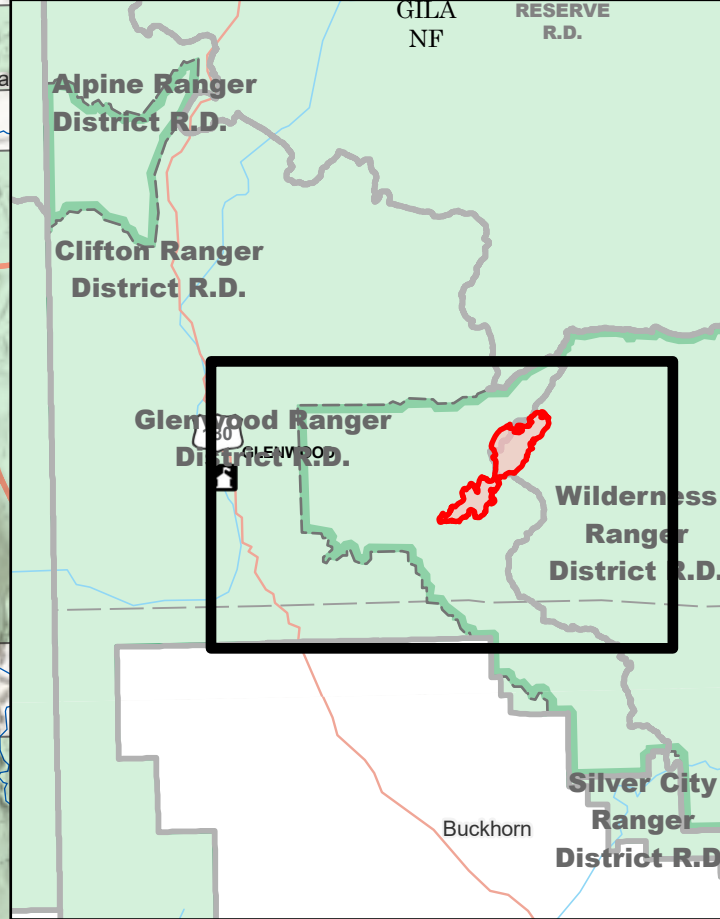
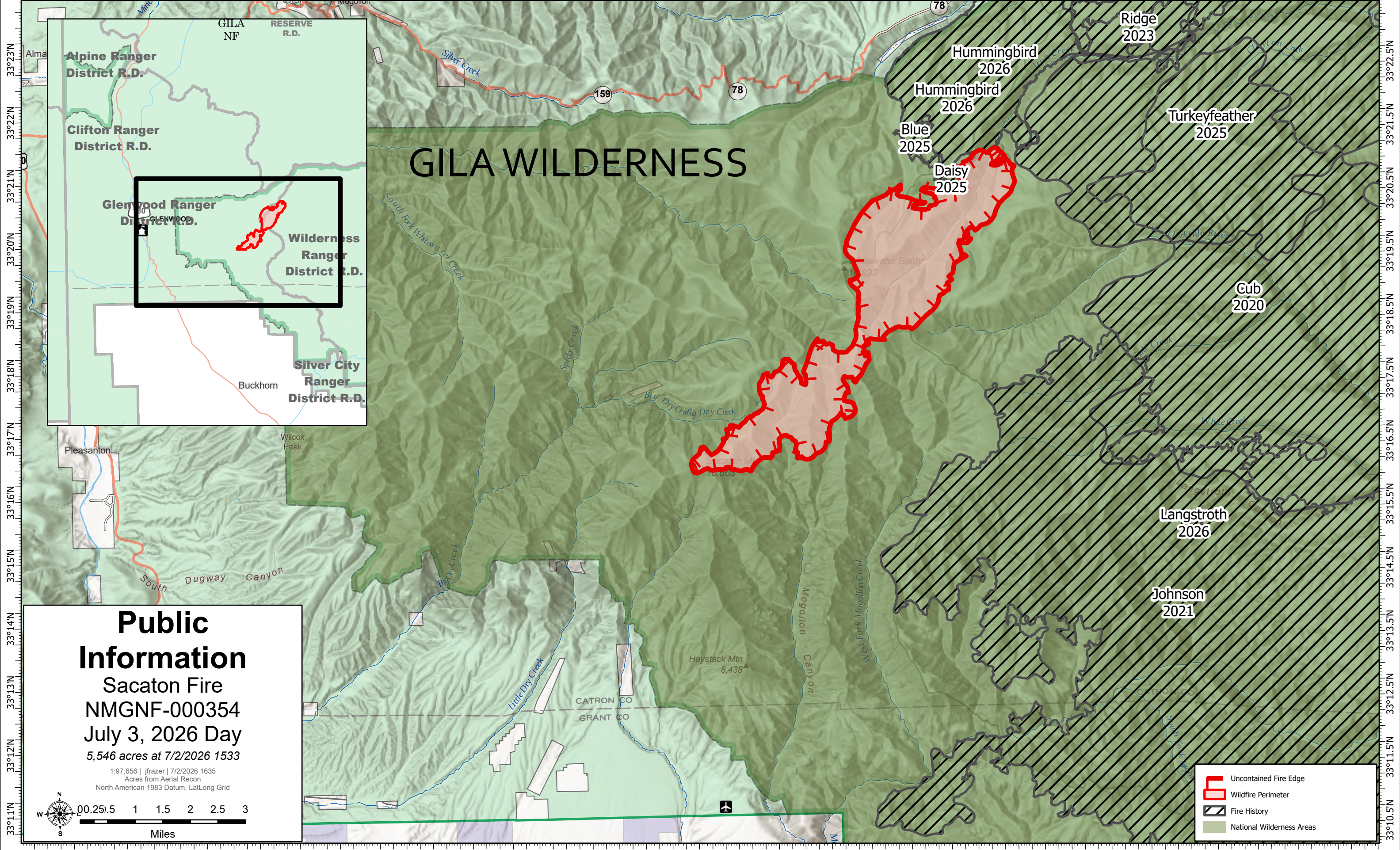


108°53.5'W 108°52.5'W 108°51.5'W 108°50.5'W 108°49.5'W 108°48.5'W 108°47.5'W 108°46.5'W 108°45.5'W 108°44.5'W 108°43.5'W 108°42.5'W 108°41.5'W 108°40.5'W 108°39.5'W 108°38.5'W 108°37.5'W 108°36.5'W 108°35.5'W 108°34.5'W 108°33.5'W 108°32.5'W 108°31.5'W 108°30.5'W 108°29.5'W 108°28.5'W



Public Information

Sacaton Fire

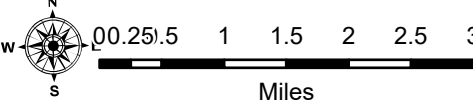
NMGNF-000354

July 3, 2026 Day

5,546 acres at 7/2/2026 1533

1:97,656 | jfraser | 7/2/2026 1635
Acres from Aerial Recon

North American 1983 Datum, Lat/Long Grid



- Uncontained Fire Edge
- Wildfire Perimeter
- Fire History
- National Wilderness Areas

108°54'W 108°53'W 108°52'W 108°51'W 108°50'W 108°49'W 108°48'W 108°47'W 108°46'W 108°45'W 108°44'W 108°43'W 108°42'W 108°41'W 108°40'W 108°39'W 108°38'W 108°37'W 108°36'W 108°35'W 108°34'W 108°33'W 108°32'W 108°31'W 108°30'W 108°29'W